



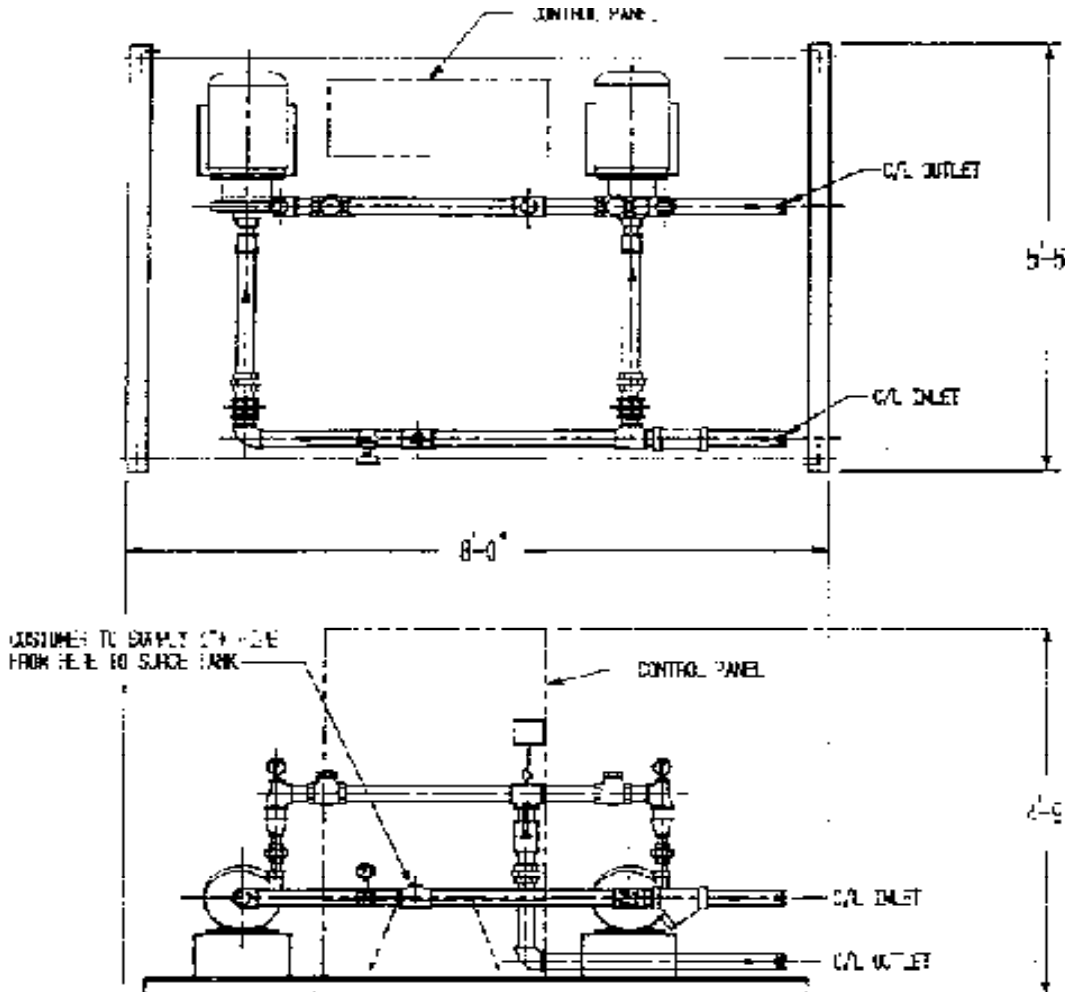
Ingersoll Rand

CLOSED LOOP EVAPORATIVE COOLERS

Ref: 11417.11
Date: 19 March 2001
Cancels: 11417.06 dated
19 September 1994

Air Solutions Group
Davidson, NC 28036

DUAL PUMP MODULE



MODEL NO.	HP	INLET "A" NPT	OUTLET "B" NPT	WGT lbs.
DP-207	7.5	3" FLG	3" FLG	1250
DP-210	10	3" FLG	3" FLG	1350
DP-215A	15	3" FLG	3" FLG	1560

NOTE: All Dimensions and Weights are approximate.
Do Not Use for Construction Purposes.