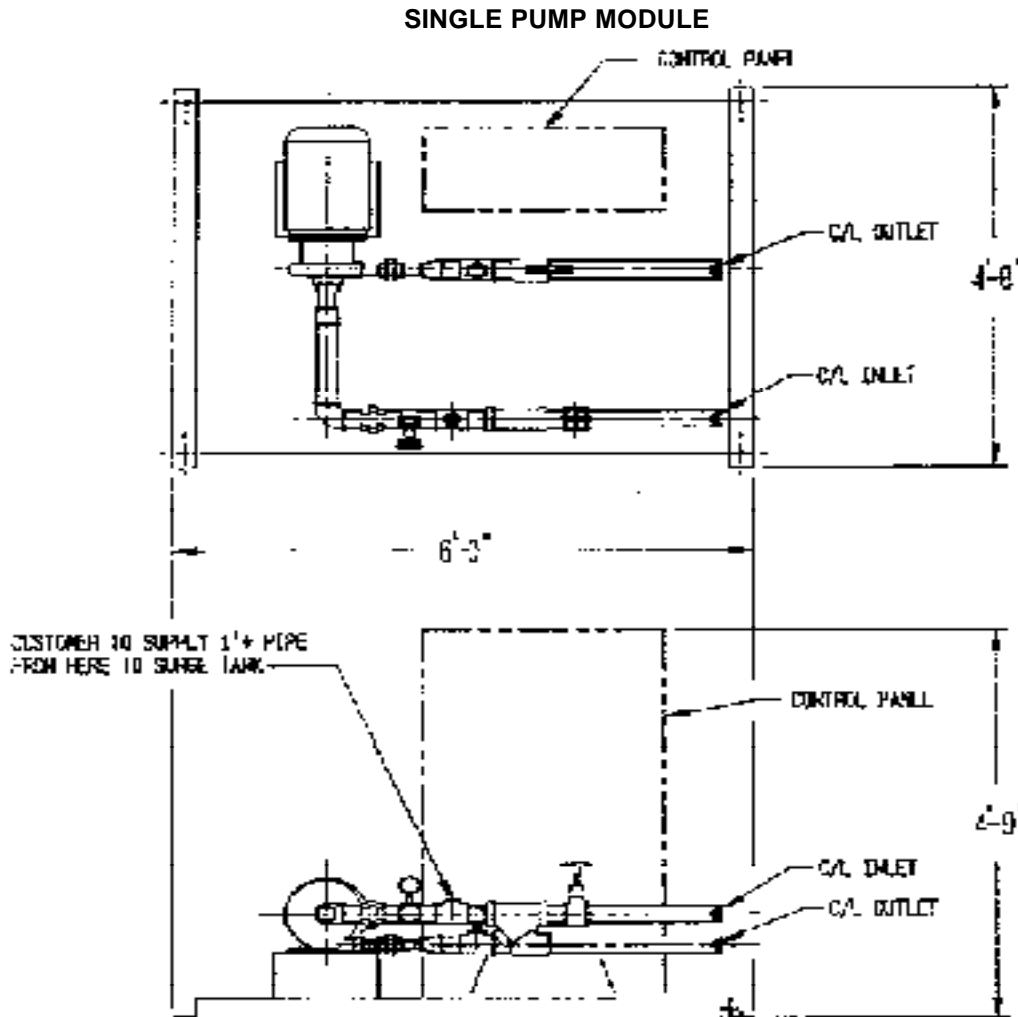


CLOSED LOOP EVAPORATIVE COOLERS

Ref: 11417.10
 Date: 19 March 2001
 Cancels: 11417.05 dated
 19 September 1994

Air Solutions Group
 Davidson, NC 28036



MODEL NO.	HP	INLET "A" NPT	OUTLET "B" NPT	WGT lbs.
P-207	7.5	3" FLG	3" FLG	740
P-210	10	3" FLG	3" FLG	775
P-215A	15	3" FLG	3" FLG	900

NOTE: All Dimensions and Weights are approximate.
 Do Not Use for Construction Purposes.