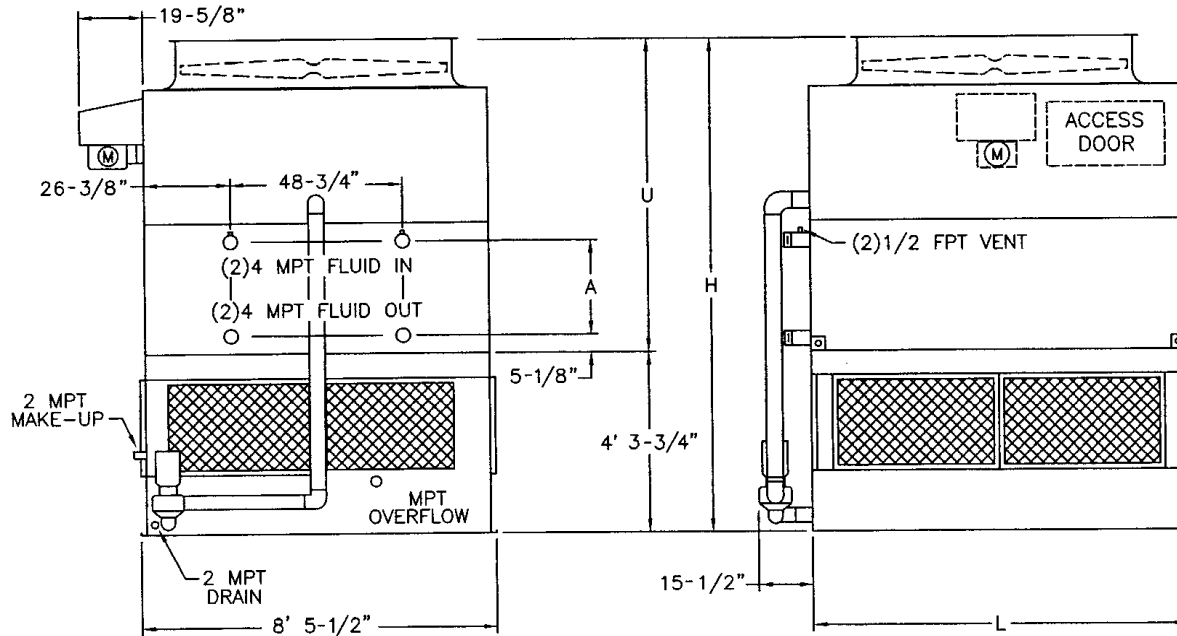


# CLOSED LOOP EVAPORATIVE COOLERS

Ref: 11417.06  
Date: 19 March 2001  
FIRST EDITION

Air Solutions Group  
Davidson, NC 28036

**INDUCED DRAFT DESIGN**  
**Engineering Data & Dimensions**  
Models *I-R 2CR3 to I-R 2CP6* (8.5' x 9' Units) & *I-R 2DR3 to I-R 2DO6* (8.5' x 10.5' Units)



I-R Model Number	Weights			Fans		Spray Pump		Coil Volume (Gallons)	Dimensions			
	Shipping	Heaviest Section*	Operating	HP	CFM	HP	GPM		H	L	U	A
2CR3	8,290	6,850	12,430	10	41,450	2	410	184	11' 2-5/8"	8' 11-1/2"	6' 10-7/8"	19-1/2"
2CQ3	8,360	6,920	12,500	15	46,630	2	410	184	11' 2-5/8"	8' 11-1/2"	6' 10-7/8"	19-1/2"
2CR4	9,560	8,120	14,170	10	40,240	2	410	240	11' 10-1/8"	8' 11-1/2"	7' 6-3/8"	27"
2CQ4	9,630	8,190	14,240	15	45,270	2	410	240	11' 10-1/8"	8' 11-1/2"	7' 6-3/8"	27"
2CR5	10,940	9,500	16,020	10	39,030	2	410	296	12' 5-5/8"	8' 11-1/2"	8' 1-7/8"	34-1/2"
2CQ5	11,010	9,570	16,090	15	43,910	2	410	296	12' 5-5/8"	8' 11-1/2"	8' 1-7/8"	34-1/2"
2CQ6	12,350	10,910	17,900	15	42,550	2	410	352	13' 1-1/8"	8' 11-1/2"	8' 9-3/8"	42"
2CP6	12,400	10,960	17,950	20	46,120	2	410	352	13' 1-1/8"	8' 11-1/2"	8' 9-3/8"	42"
2DR3	9,520	7,860	14,380	10	45,960	3	500	212	11' 2-5/8"	10' 5-1/2"	6' 10-7/8"	19-1/2"
2DQ3	9,590	7,930	14,450	15	52,130	3	500	212	11' 2-5/8"	10' 5-1/2"	6' 10-7/8"	19-1/2"
2DR4	11,000	9,340	16,410	10	44,620	3	500	278	11' 10-1/8"	10' 5-1/2"	7' 6-3/8"	27"
2DQ4	11,070	9,410	16,480	15	50,610	3	500	278	11' 10-1/8"	10' 5-1/2"	7' 6-3/8"	27"
2DQ5	12,690	11,030	18,650	15	49,090	3	500	344	12' 5-5/8"	10' 5-1/2"	8' 1-7/8"	34-1/2"
2DP5	12,740	11,080	18,700	20	53,210	3	500	344	12' 5-5/8"	10' 5-1/2"	8' 1-7/8"	34-1/2"
2DP6	14,300	12,640	20,810	20	51,570	3	500	410	13' 1-1/8"	10' 5-1/2"	8' 9-3/8"	42"
2DO6	14,330	12,670	20,840	25	54,890	3	500	410	13' 1-1/8"	10' 5-1/2"	8' 9-3/8"	42"

\* Heaviest section is the coil/fan section.