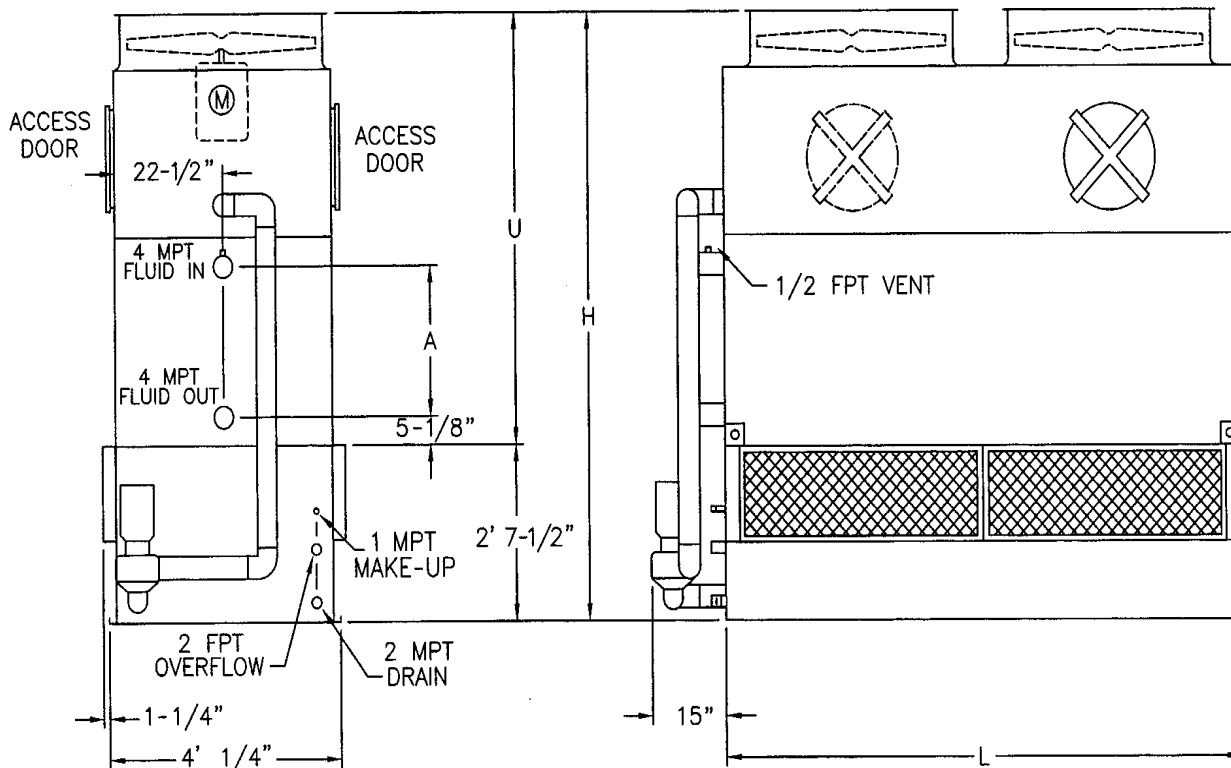


# CLOSED LOOP EVAPORATIVE COOLERS

Ref: 11417.04  
 Date: 19 March 2001  
 Cancels: 11 April 1997

Air Solutions Group  
 Davidson, NC 28036

**INDUCED DRAFT DESIGN**  
**Engineering Data & Dimensions**  
**Models IR-1CU3 to I-R 1CU5 (4' x 9' Units)**  
**Models I-R 1EU3 to I-R 1ET5 (4' x 12' Units)**



I-R Model Number	Weights			Fans		Spray Pump		Coil Volume (Gallons)	Dimensions			
	Shipping	Heaviest Section*	Operating	HP	CFM	HP	GPM		H	L	U	A
<b>1CU3</b>	3,720	3,110	6,060	(2) 3	20,400	1	200	82	8' 5-1/8"	8' 11-1/2"	5' 9-5/8"	19-1/2"
<b>1CU4</b>	4,330	3,730	6,900	(2) 3	19,800	1	200	107	9' 5/8"	8' 11-1/2"	6' 5-1/8"	27"
<b>1CU5</b>	4,990	4,380	7,780	(2) 3	19,100	1	200	133	9' 8-1/8"	8' 11-1/2"	7' 5/8"	34-1/2"
<b>1EU3</b>	4,750	3,980	7,910	(2) 3	25,300	1.5	270	108	8' 5-1/8"	11' 11-3/4"	5' 9-5/8"	19-1/2"
<b>1ET3</b>	4,750	3,980	7,910	(2) 5	28,580	1.5	270	108	8' 5-1/8"	11' 11-3/4"	5' 9-5/8"	19-1/2"
<b>1ET4</b>	5,620	4,840	9,080	(2) 5	27,700	1.5	270	143	9' 5/8"	11' 11-3/4"	6' 5-1/8"	27"
<b>1ET5</b>	6,450	5,680	10,210	(2) 5	26,900	1.5	270	177	9' 8-1/8"	11' 11-3/4"	7' 5/8"	34-1/2"

\* Heaviest section is the coil/fan section.