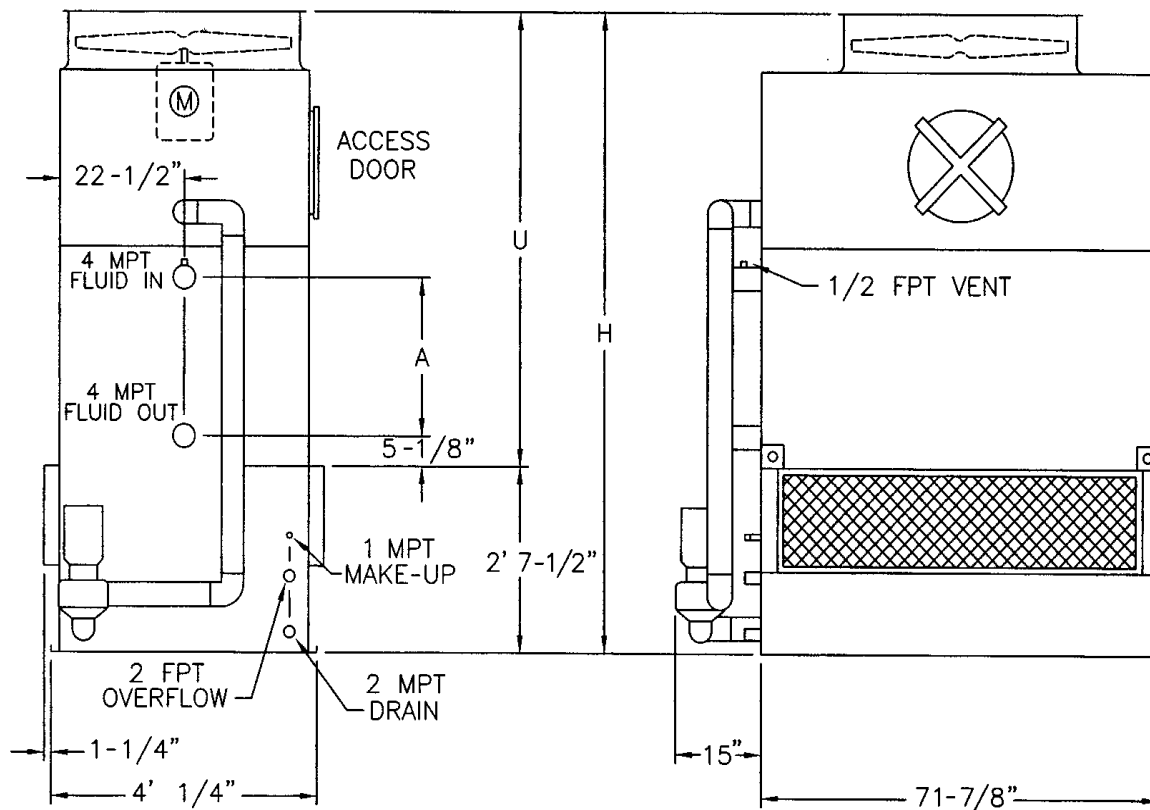


# CLOSED LOOP EVAPORATIVE COOLERS

Air Solutions Group  
Davidson, NC 28036

Ref: 11417.03  
Date: 19 March 2001  
FIRST EDITION

**INDUCED DRAFT DESIGN**  
Engineering Data & Dimensions  
Models *IR-1AT3* to *IR-1AT5* (4' x 6' Units)



I-R Model Number	Weights			Fans		Spray Pump		Coil Volume (Gallons)	Dimensions		
	Shipping	Heaviest Section*	Operating	HP	CFM	HP	GPM		H	U	A
<b>1AT3</b>	2,610	2,160	4,230	5	14,300	0.75	135	56	8' 5-1/8"	5' 9-5/8"	19-1/2"
<b>1AT4</b>	3,030	2,570	4,790	5	13,900	0.75	135	73	9' 5/8"	6' 5-1/8"	27"
<b>1AT5</b>	3,470	3,020	5,390	5	13,400	0.75	135	89	9' 8-1/8"	7' 5/8"	34-1/2"

\* Heaviest section is the coil/fan section.