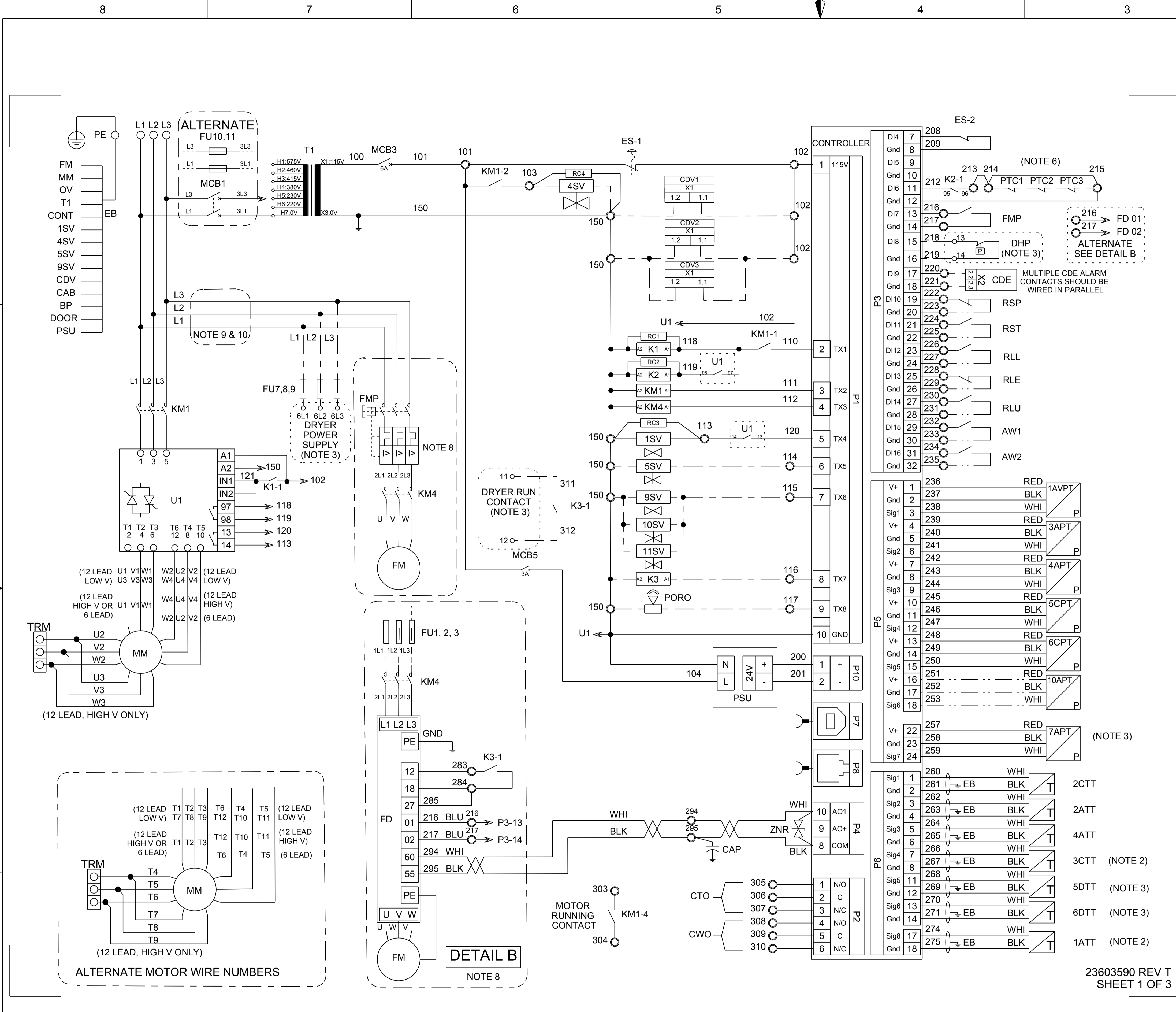


REVISIONS					
ZONE	REV	ECN	DESCRIPTION	DATE	APP'D
	A	79093	ORIGINAL RELEASE	2010SEP27	J. HUNT B.WARREN
C5 D6 D5 D3	B	79565	MOVED RC3 ADDED RC4 CHANGED CDV TO CDV1, ADDED CDV2 AND CDV3 CHANGED NOTE TO SAY "PARALLEL" INSTEAD OF "SERIES" CHANGED MCB6 TO FU7,8,9 AND CHANGED SYMBOL MOVED 3ATS AND ADDED K4 AND RC5 ADDED KM1-5 AND K4-1 CONTACTS CHANGE WIRING FOR TERMINAL 15 TO JUMP TO TERMINAL 12 ADDED INLET VALVE HEATER (IVH)	2011MAR11	C. LEAMON B.WARREN
C8 2-C4 2-C5 3-C4					
2-B3					
3,D7 1,D8	C	79852	"TO FU7,8,9" WAS "TO MCB6". CONT WAS SGN REMOVED RATING FOR MCB1 AND ADDED ALT. ADDED CONNECTION DIAGRAM FOR 12 LEAD MOTOR REMOVED RATING FOR FU7,8,9 ADDED CONT AND TRM TO LEGEND NOTE 8 37-75KW WAS 55-57KW 575V WIRING DETAIL 37-75KW WAS 55-75KW REMOVED RATING FOR 1T1	2011JUN10	OWANESIAN C. LEAMON B.WARREN
1,C8 1,B8 2					
3,C5					
1,C7	D	81015	RELOCATED DRYER POWER SUPPLY.	2012AUG22	OWANESIAN B.WARREN
2-D5	E	81440	UPDATED DRAWING TO THE LATEST FORMAT. UPDATED "WIRE DESIGNATION LEGEND" TABLE TO THE LATEST INFORMATION AND ADDED "WIRE SIZE" COLUMN.	2013JAN18	H.AVINASH J.DAVIS
1-B7 2-B7	F	81697	DETAIL "A" MOVE SWITCH 16 TO THE UP POSITION REWORDED NOTE 7 TO READ: CONFIGURE SOFT STARTER DIP SWITCHES AS SHOWN BEFORE INITIAL START. SEE DETAIL A.	2013APR12	W.SORAH G.DRAUGHN
2	G	81610	UPDATED LOW AMBIENT DETAIL D	2013MAY20	C. LEAMON B.WARREN
1,C6 1,B6	H	82143	ADD FU1, 2, 3 WITH 1L1, 1L2, 1L3 CHANGE ORDER OF KM4 AND FU1, 2, 3 1L1, 1L2, 1L3 WAS 4L1, 4L2, 4L3. MODEL: R37-75 WAS R55-75.	2014FEB26	K.CODY B.WARREN
1,A1					
1-B6	J	82711	UPDATED THE DRAWING TO LATEST FORMAT, UPDATED MCB5 FROM 1A TO 3A.	2014MAY12	G.SATHISHA S.MARCUS
2,D5 2,D4 2,C4 2,A6	K	83025	ADDED FU1,2,3 AND 1L1, 1L2, 1L3 TO DETAIL C ADDED NOTE 10 TO DETAIL C DETAIL D NOTE 11 WAS NOTE 10 NOTES SECTION: ADDED 230V TO NOTE 9, ADDED NOTE 10, NOTE 11 WAS NOTE 10	2014AUG22	K.CODY B.WARREN
1-C7	L	83336	MOVED FU1,2,3 AND 1L1, 1L2, 1L3 TO DETAIL B REVISED KM4 AND FMP ORIENTATION	2014DEC18	W.SORAH G.DRAUGHN
2,D3	M	83412	REPLACE SYMBOL DETAIL C KM4 WITH FMP SYMBOL	2015JAN27	K.CODY H.XIANG
1-C7 1-C6 1-B8 2-C3 3-C7 2-B7	N	83433	ADD NOTE 10 TO NOTE 9 ADD DASHED BOX AROUND FMP, KM4 ADD ALTERNATE MOTOR WIRE NUMBERS REMOVE KM4 SYMBOL- 3L1, 3L2, 3L3 WAS 2L1,2L2,2L3 REMOVE VERTICAL DASH LINE MOVE DETAIL A TO PAGE 2	2015MAR03	K.CODY H.XIANG
1-C8 1-B8	P	83543	REVISE MAIN MOTOR LABELS: U3 V3 W3 WAS U5 V5 W5 (2 PLACES) AND W4 U4 V4 WAS W6 U6 V6 (2 PLACES)	2015MAR26	K.CODY H.XIANG
D5 D4	R	83357	REMOVE GROUND 1.3 AND LABEL X1 WAS KL1 ON CDV. X2 WAS KL2 ON CDE.	2015MAR30	K.CODY A.TRAVERS
1-D5	T	83778	REVISE CDV LINES TO ILLUSTRATE CONNECTION TO POSITIVE AND NEGATIVE	2015JUL07	K.CODY A.TRAVERS



NOTES:
1. DECAL MUST CONFORM TO THE LATEST REVISION OF IR SPECIFICATION 92-8.95.

WARNING: THE EXPORT OR REEXPORT OF THIS DRAWING OR A PRODUCT PRODUCED BY THIS DRAWING IS SUBJECT TO U.S. EXPORT ADMINISTRATION REGULATIONS AND OTHER APPLICABLE GOVERNMENT RESTRICTIONS OR REGULATIONS.

PROPRIETARY NOTICE
THIS DRAWING CONTAINS CONFIDENTIAL AND TRADE SECRET INFORMATION, IS THE PROPERTY OF INGERSOLL-RAND CO., AND IS GIVEN TO THE RECEIVER IN CONFIDENCE. THE RECEIVER BY ACCEPTANCE AND RETENTION OF THE DRAWING ACCEPTS THE DRAWING IN CONFIDENCE AND AGREES THAT, EXCEPT AS AUTHORIZED IN WRITING BY INGERSOLL-RAND CO., IT WILL (1) NOT USE THE DRAWING OR ANY COPY THEREOF OR THE CONFIDENTIAL OR TRADE SECRET INFORMATION THEREIN; (2) NOT COPY THE DRAWING; (3) NOT DISCLOSE TO OTHERS EITHER THE DRAWING OR THE CONFIDENTIAL OR TRADE SECRET INFORMATION THEREIN; AND (4) UPON COMPLETION OF THE NEED TO RETAIN THE DRAWING, OR UPON DEMAND, RETURN THE DRAWING, ALL COPIES THEREOF, AND ALL MATERIAL COPIED THEREFROM.

DO NOT SCALE DRAWING
DRAWING CONFORMS TO ASME Y14.5M - 1994
CAD GENERATED DRAWING, NO MANUAL REVISIONS ALLOWED
UNLESS OTHERWISE SPECIFIED:
- REMOVE ALL BURRS AND SHARP CORNERS
- WELD SYMBOLS TO BE IN ACCORDANCE WITH ANSI/AWS A2.4
COPYRIGHT © 2015
Ingersoll Rand
ALL RIGHTS RESERVED

THIRD ANGLE PROJECTION
DRAWN: J. HUNT
DATE: 2010SEP27
CHECKED: B. WARREN
DATE: 2010SEP27
APPROVED: B. WARREN
DATE: 2010SEP27
DRAWING TYPE: Schematic Diagram
NOMENCLATURE:

IR Ingersoll Rand

NAME: **SCHEMATIC, ELECTRICAL WIRING (FS-SS)**

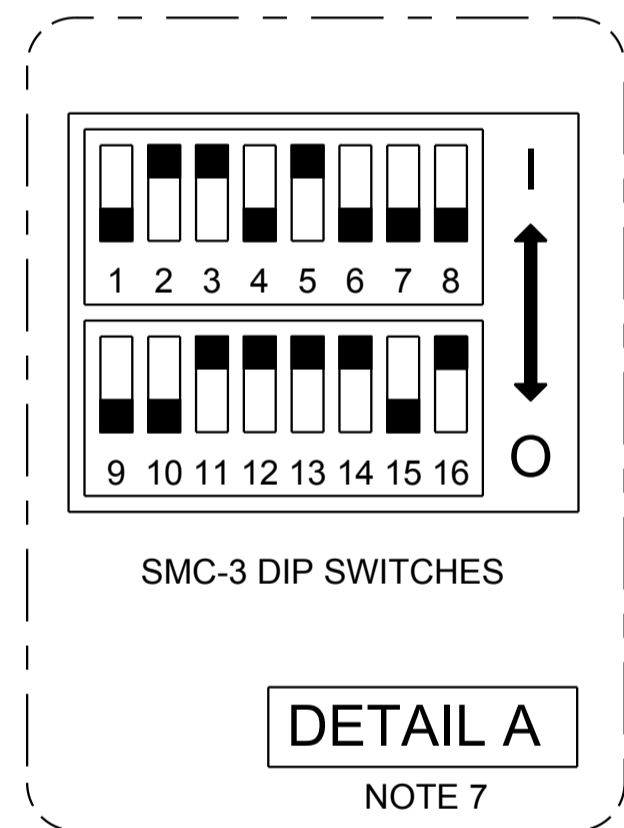
SIZE: **A1** ESTIMATED WEIGHT (NO UNLESS OTHERWISE SPECIFIED): **0.0 kilogram** DWG NO.: **23603590** REVISION: **T**

SCALE: **1.00** MODEL: **R37-75** SHEET: **1 of 3**

LEGEND	
LABEL	DESCRIPTION
OV	ZERO VOLTAGE
1ATT	PACKAGE INLET TEMPERATURE
1AVPT	INLET VACUUM PRESSURE
1M1	DRYER COMPRESSOR MOTOR
1M2	DRYER FAN MOTOR
1P1	DRYER SAFETY PRESSURE SWITCH
1P2	DRYER FAN PRESSURE SWITCH
1Qx	DRYER CIRCUIT BREAKERS
1SV	LOAD VALVE
1SVT	1SV HEAT TRACE
1T1	DRYER CONTROL POWER TRANSFORMER
2ATT	AIREND DISCHARGE TEMPERATURE
2CTT	INJECTED COOLENT TEMPERATURE
3APT	WET SUMP PRESSURE
3ATS	AMBIENT TEMP THERMOSTAT
3CTT	COOLANT COOLER OUT TEMP.
4APT	PACKAGE DISCHARGE PRESSURE
4ATT	PACKAGE DISCHARGE TEMPERATURE
4SV	WATER SHUT OFF VALVE (W/C ONLY)
5CPT	COOLANT FILTER IN PRESSURE
5DTT	DRYER DEWPOINT
5SV	MODULATION VALVE
6CPT	COOLANT FILTER OUT PRESSURE
6DTT	REFRIGERANT TEMPERATURE
7APT	PACKAGE A/C PRESSURE
9SV	MOISTURE SEPARATOR DRAIN VALVE
10APT	REMOTE PRESSURE
10SV	DRYER FILTER DRAIN VALVE
11SV	DRYER DRAIN VALVE
AT1	AUTO TRANSFORMER
AW1	AUXILIARY WARNING 1
AW2	AUXILIARY WARNING 2
BLH	BASE LEVEL HEATER
BP	BACKPANEL
CAB	CABINET
CAP	CAPACITOR
CDE1	CONDENSATE DRAIN ERROR (M/S)
CDE2	CONDENSATE DRAIN ERROR (DRYER FILTER)
CDE3	CONDENSATE DRAIN ERROR (DRYER DRAIN)
CDV1	CONDENSATE NO LOSS DRAIN VALVE (M/S)
CDV2	CONDENSATE NO LOSS DRAIN VALVE (DRYER FILTER)
CDV3	CONDENSATE NO LOSS DRAIN VALVE (DRYER DRAIN)
CONT	Xe CONTROLLER
CTO	COMMON TRIP OUTPUT
CWO	COMMON WARNING OUTPUT
Ctx	CURRENT TRANSFORMER
DHP	DRYER HIGH PRESSURE SWITCH
DMH	DRIVE MOTOR HEATER
EB	EARTHING BAR
ES	EMERGENCY STOP BUTTON
FD	FAN DRIVE
FM	FAN MOTOR
FMH	FAN MOTOR HEATER
FMP	FAN MOTOR PROTECTOR
FU-	FUSES
K1	START CONTROL RELAY
K2	STARTER FAULT RELAY
K3	DRYER / BLOWER DRIVE RELAY
KM1	ISOLATION CONTACTOR
KM4	FAN MOTOR CONTACTOR
KM5	DRYER COMPRESSOR CONTACTOR
KM6	DRYER FAN MOTOR CONTACTOR
MCB	CIRCUIT BREAKERS
MM	MAIN MOTOR
MSHT	MOISTURE SEPARATOR HEAT TRACE
OSH	OIL SUMP HEATER
PE	PROTECTED EARTH
PORO	POWER OUTAGE RESTART OPTION
PSU	POWER SUPPLY UNIT
PTCx	MOTOR WINDING THERMISTOR
R1	DRYER PRESSURE SWITCH RELAY
RCx	ARC SUPPRESSOR
RLE	REMOTE LOAD ENABLE
RL	REMOTE LEAD LAG
RLU	REMOTE LOAD/UNLOAD
RSP	REMOTE STOP
RST	REMOTE START
SSH	STARTER SPACE HEATER
T1	CONTROL POWER TRANSFORMER
TH	THERMOSTAT
TRM	POWER TERMINAL
ZNR	ZENER DIODE
IHV	INLET VALVE HEATER

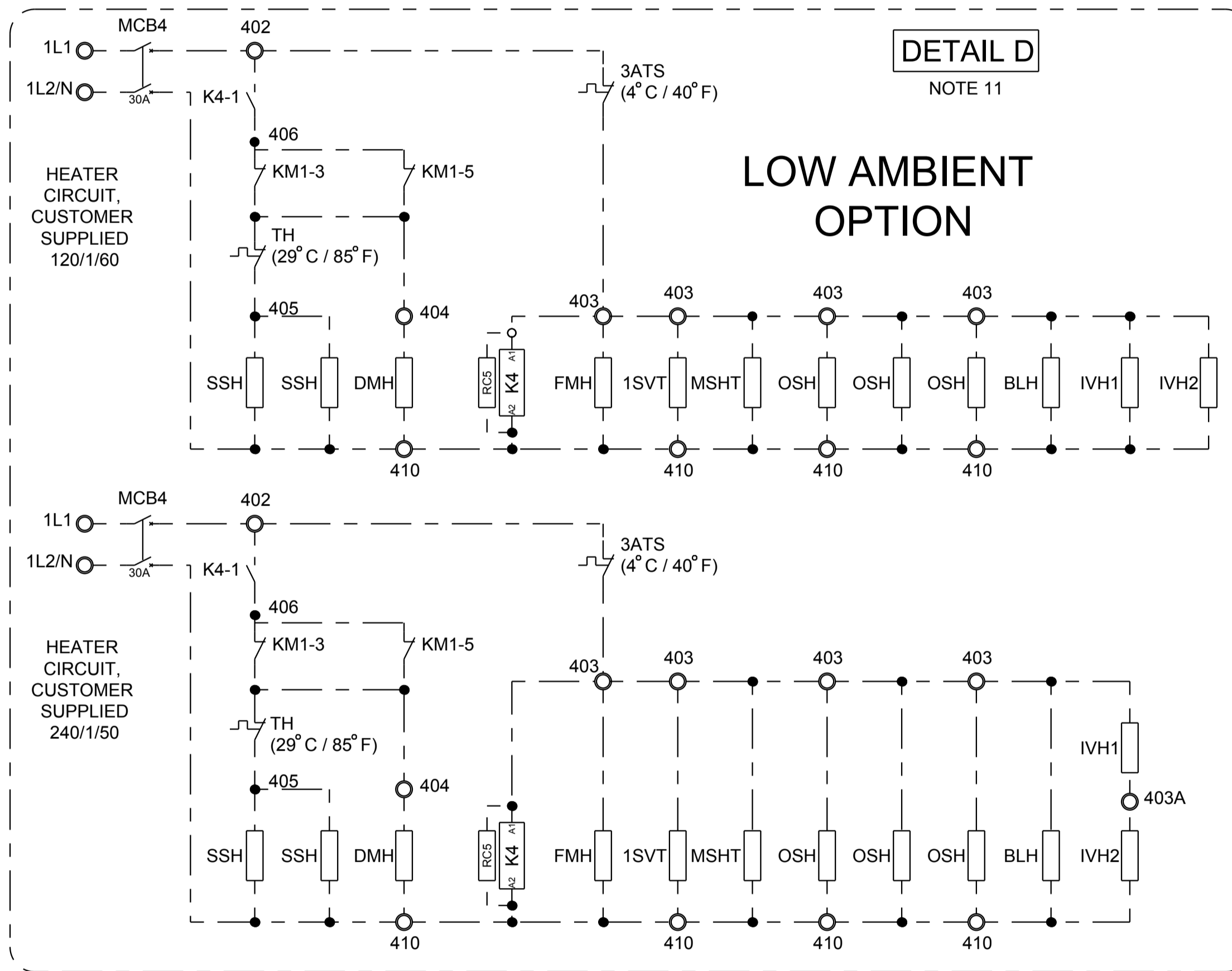
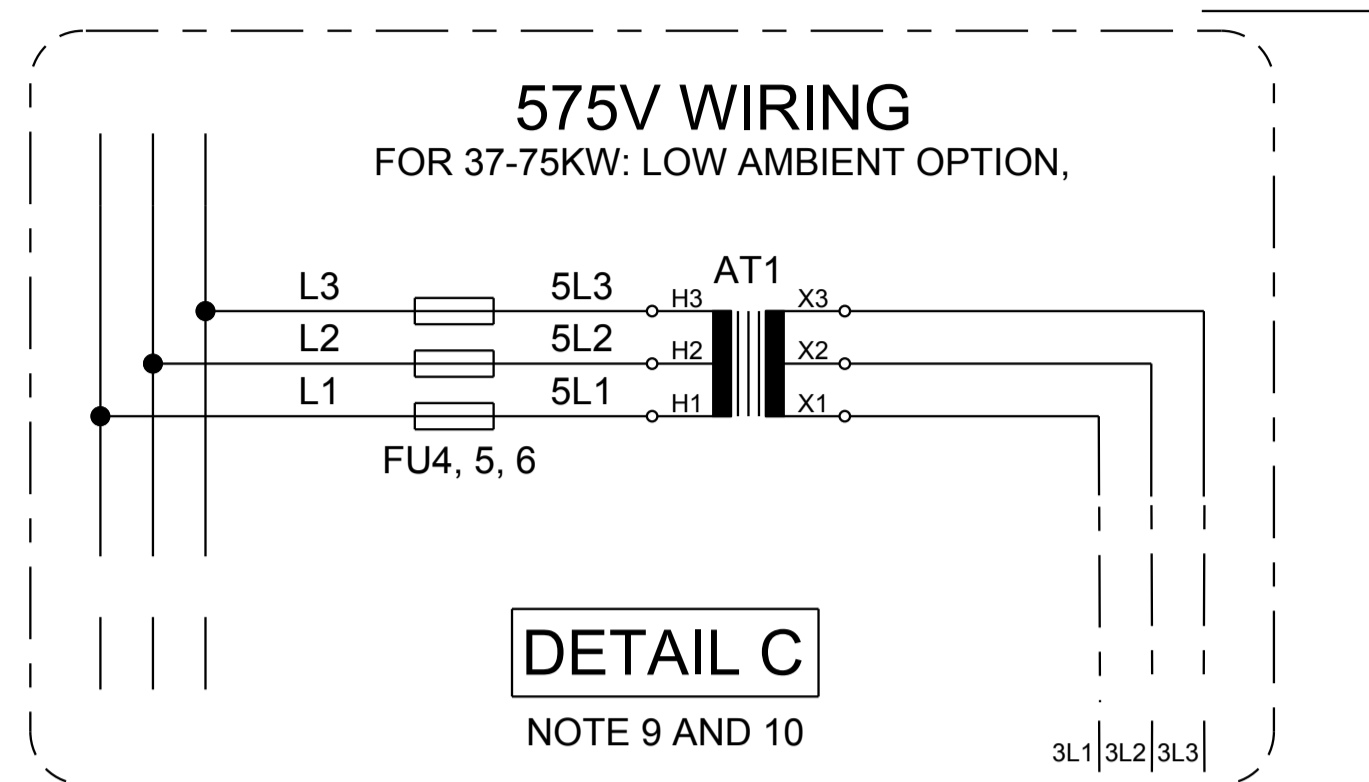
WIRE DESIGNATION LEGEND				
NUMBERS	FUNCTION	WIRE COLOR-EU STD	WIRE COLOR-UL STD	WIRE SIZE
1 - 99	POWER	BLACK	BLACK	A/R
100 - 199	AC CONTROL	RED	RED	18 AWG (1mm ²)
100 - 199	GROUNDING AC	GREEN / YELLOW	WHITE	18 AWG (1mm ²)
200 - 299	DC CONTROL	BLUE	BLUE	18 AWG (1mm ²)
300 - 399	AUXILIARY	RED / BLUE / BLACK	ORANGE	18 AWG (1mm ²)
400-499	AC POWER	ORANGE	RED	18 AWG (1mm ²)
GND	GROUNDING	GREEN / YELLOW	GREEN / YELLOW	A/R

WIRE COLOR LEGEND	
LABEL	DESCRIPTION
BLK	BLACK
BLU	BLUE
BRO	BROWN
GRE	GREEN
PIN	PINK
RED	RED
VIO	VIOLET
WHI	WHITE
YEL	YELLOW



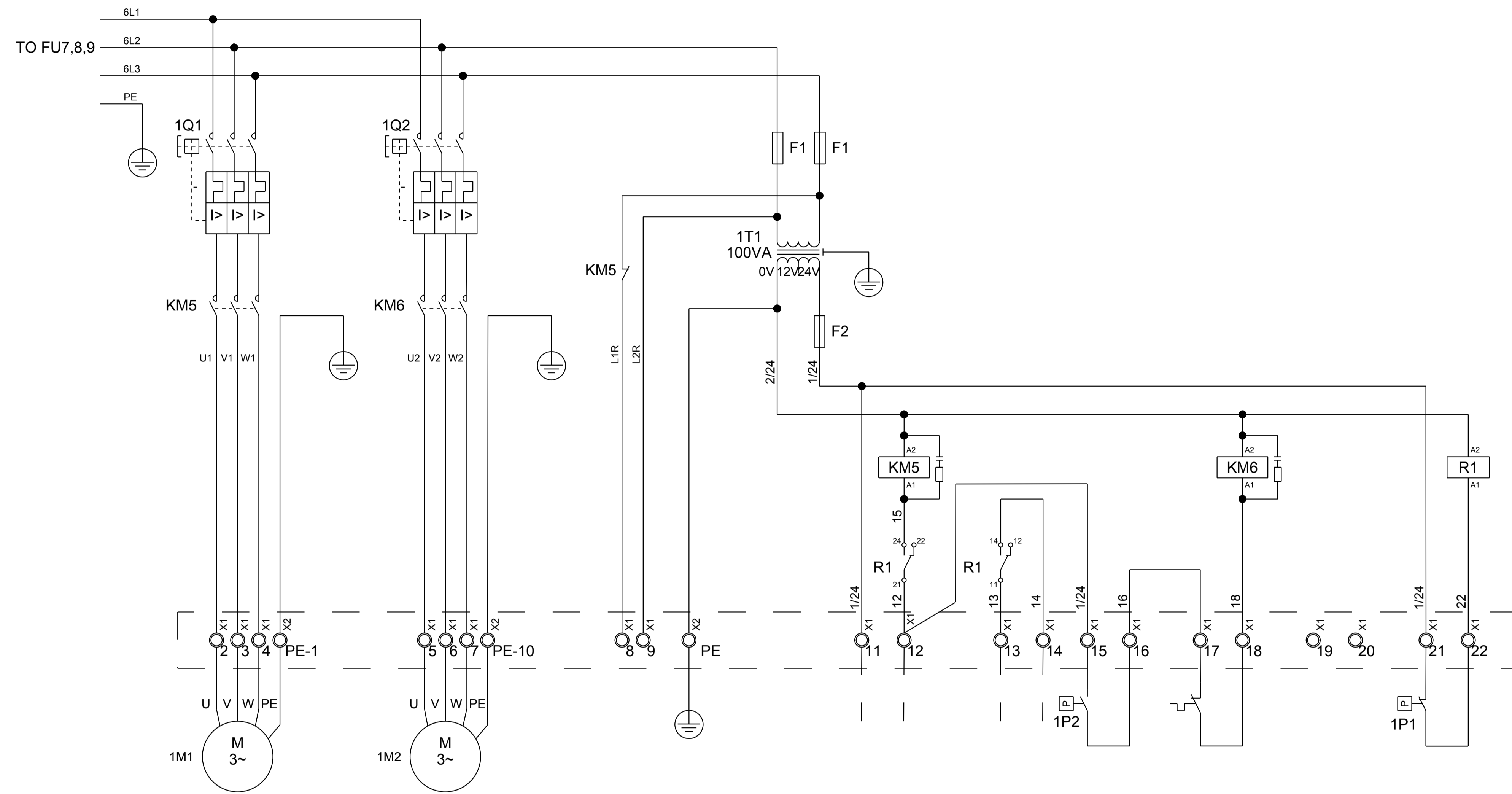
NOTES:

- APPROVED FUSED DISCONNECT OR CIRCUIT BREAKER PER LOCAL ELECTRICAL CODES MUST BE PROVIDED BY THE CUSTOMER.
- SENSORS 1ATT AND 3CTT ARE ONLY USED WHEN THE SMART THERMAL VALVE IS INSTALLED.
- ONLY USED ON UNITS WITH INTEGRATED DRYERS.
- INDICATES OPTIONAL COMPONENTS.
- INDICATES OPTIONAL FIELD WIRED COMPONENTS.
- REMOVE JUMPER(S) WHEN CORRESPONDING OPTION HAS BEEN PURCHASED.
- CONFIGURE SOFT STARTER DIP SWITCHES AS SHOWN BEFORE INITIAL START. SEE DETAIL A.
- A VARIABLE SPEED DRIVE IS REQUIRED FOR 37-75KW UNITS WITH LOW AMBIENT OPTION. SEE DETAIL B.
- A THREE PHASE TRANSFORMER IS REQUIRED FOR 230V AND 575V 60 Hz UNITS WITH A VARIABLE SPEED DRIVE CONTROLLING THE BLOWER MOTOR. SEE DETAIL C.
- A THREE PHASE TRANSFORMER IS REQUIRED FOR 575V 60 Hz WATER COOLED UNITS AND 575V 60Hz UNITS WITH A DRYER. SEE DETAIL C.
- THERMOSTAT AND TEMPERATURE SWITCH CONTACTS ARE NORMALLY CLOSED AND WILL OPEN WHEN THE TEMPERATURE MEETS OR EXCEEDS THE INDICATED SET POINT. SEE DETAIL D.




23603590 REV T
SHEET 2 OF 3

<small>PROPRIETARY NOTICE</small> THIS DRAWING CONTAINS CONFIDENTIAL AND TRADE SECRET INFORMATION IS THE PROPERTY OF INGERSOLL-RAND CO. AND IS GIVEN TO THE RECEIVER IN CONFIDENCE. THE RECEIVER BY RECEIPT AND RETENTION OF THIS DRAWING ACCEPTS THE DRAWING IN CONFIDENCE AND AGREES THAT, EXCEPT AS AUTHORIZED IN WRITING BY INGERSOLL-RAND CO. IT WILL (1) NOT USE THE DRAWING OR ANY COPY THEREOF OR THE CONFIDENTIAL OR TRADE SECRET INFORMATION THEREIN; (2) NOT COPY THE DRAWING; (3) NOT DISCLOSE TO OTHERS EITHER THE DRAWING OR THE CONFIDENTIAL OR TRADE SECRET INFORMATION THEREIN; AND (4) UPON COMPLETION OF THE NEED TO RETAIN THE DRAWING OR UPON DEMAND, RETURN THE DRAWING, ALL COPIES THEREOF, AND ALL MATERIAL COPIED THEREFROM.		NAME SCHEMATIC, ELECTRICAL WIRING (FS-SS)	
SIZE A1	DWG NO. 23603590	REVISION T	
SCALE 1.00	NOMENCLATURE	SHEET 2	OF 3



23603590 REV T
SHEET 3 OF 3

<small>PROPRIETARY NOTICE</small> <small>THIS DRAWING CONTAINS CONFIDENTIAL AND TRADE SECRET INFORMATION. IT IS THE PROPERTY OF INGERSOLL-RAND CO. AND IS GIVEN TO THE RECEIVER IN CONFIDENCE. THE RECEIVER BY ACCEPTANCE AND RETENTION OF THIS DRAWING ACCEPTS THE DRAWING IN CONFIDENCE AND AGREES THAT, EXCEPT AS AUTHORIZED IN WRITING BY INGERSOLL-RAND CO., IT WILL (1) NOT USE THE DRAWING OR ANY COPY THEREOF OR THE CONFIDENTIAL OR TRADE SECRET INFORMATION THEREIN; (2) NOT COPY THE DRAWING; (3) NOT DISCLOSE TO OTHERS EITHER THE DRAWING OR THE CONFIDENTIAL OR TRADE SECRET INFORMATION THEREIN; AND (4) UPON COMPLETION OF THE NEED TO RETAIN THE DRAWING OR UPON DEMAND, RETURN THE DRAWING, ALL COPIES THEREOF, AND ALL MATERIAL COPIED THEREFROM.</small>		<small>NAME</small> SCHEMATIC, ELECTRICAL WIRING (FS-SS)	
<small>SIZE</small> A1	<small>DWG NO.</small> 23603590	<small>REVISION</small> T	
<small>SCALE</small> 1.00	<small>NOMENCLATURE</small>	<small>SHEET</small> 3 of 3	